

ULTIME D

Patented

metalfire

Technical Document

Model: ULTIME D MF 600-50 WHE 1S

Dimensions (mm)

- combustion opening WxH: 636x506
- external WxDxH: 860x619x1561
- fresh air: 2xØ150
- diameter flue: Ø250

Technical Data

- capacity: 13.8kW
- efficiency capacity: 80.3%
- CO (volume with 13%O<sub>2</sub>): 0.09%
- dust (volume with 13%O<sub>2</sub>): 33mg/N<sup>3</sup>
- weight: 345kg
- Air intake to convection: minimum 360cm<sup>2</sup> (2xØ150)
- Air exhaust to convection: minimum 360cm<sup>2</sup> (2xØ150)

Specifications

- inside finishing: heat-resistant black paint
- vermiculite insulation plates
- convection jacket in galvanized steel
- cast iron stoke grate
- back and sides: ribbed cast iron
- interior finishing: ORIGINAL (ribbed cast iron)

Options

- Promat insulation kit
- Finishing frame

Table: prescribed insulation thickness (mm)

	Combustable finishing material				
	A	B	C	D	E
Test report (TC = 0,14 W/mK)	63	NC	120	113	40
Metalfire recommended Promasil 1100L (TC = 0,081 W/mK)	40	NC	70	65	25

	Non-combustable finishing material				
	0	0	0	0	0
non-combustable materials (structural building items EXCLUDED e.g. load bearing walls)					

TC = thermal conductivity NC = non-combustible

First aid and technical support:

- support@metalfire.eu
- +32 (0)9 261 50 57

scale 1:20

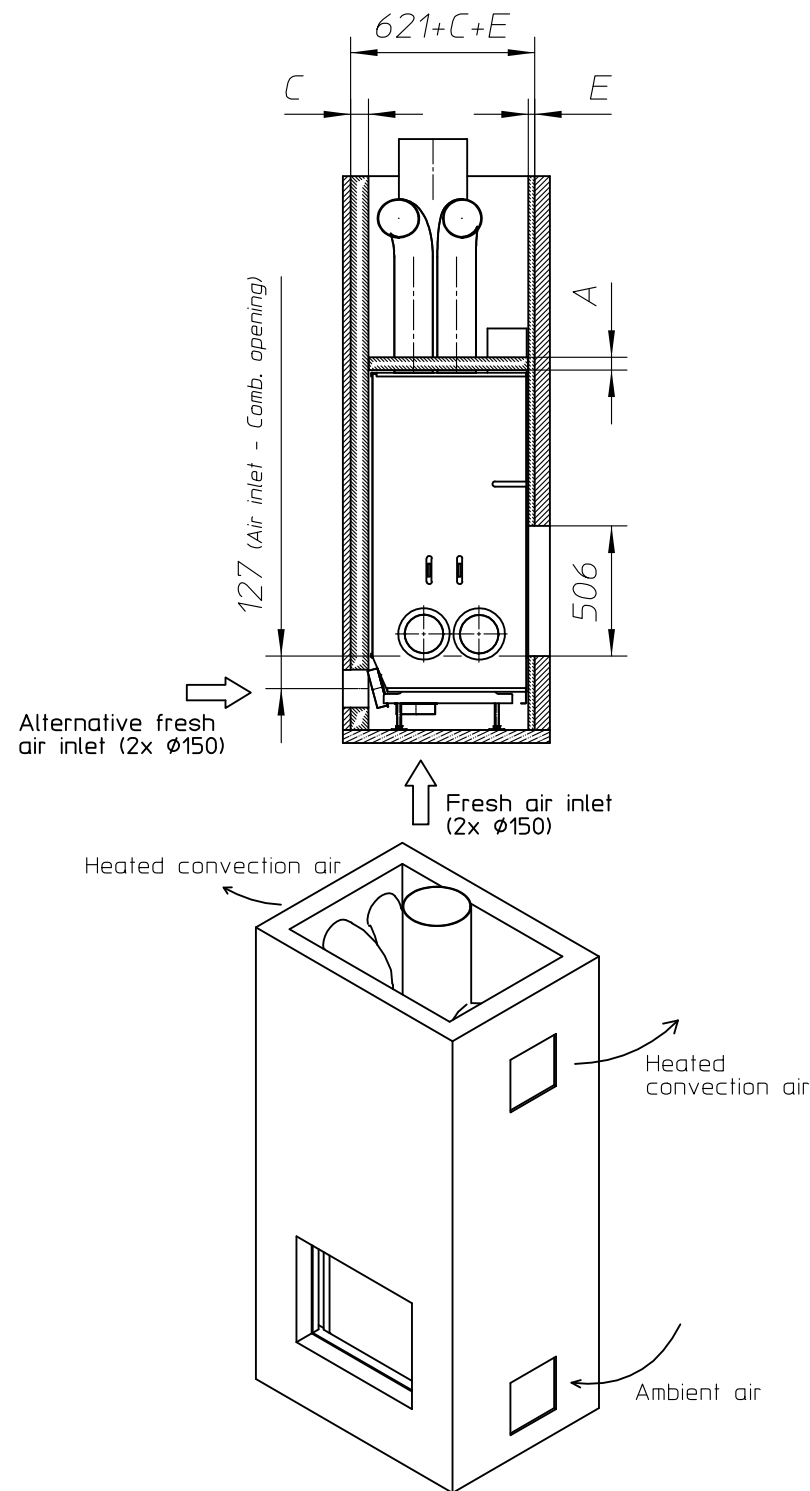
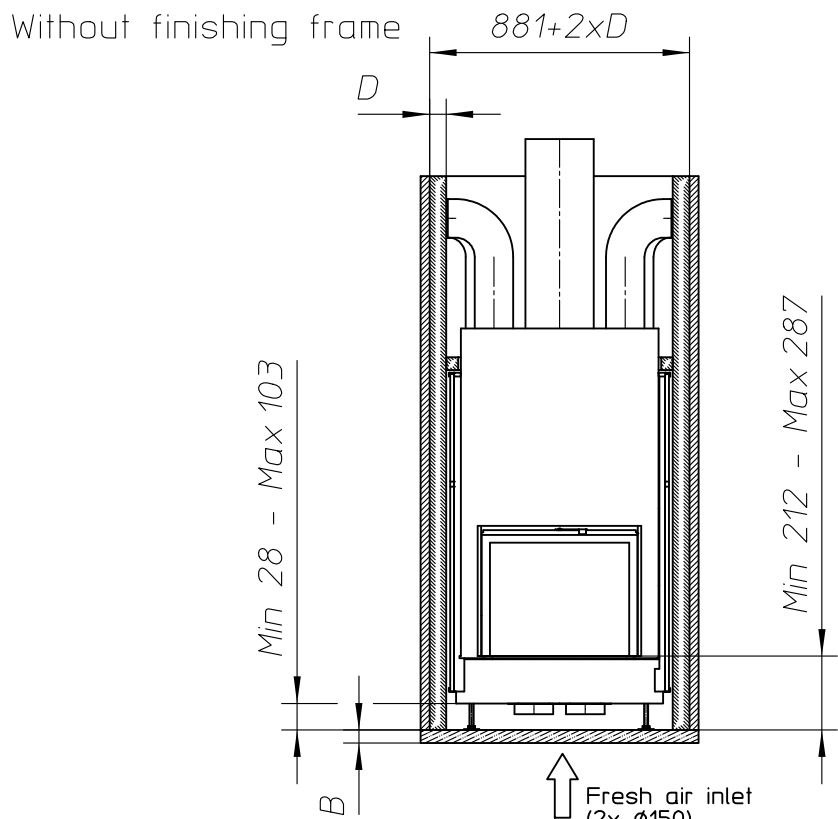
www.metalfire.eu

EN 13229

General dimensional tolerances up to 6mm Metalfire preserves the right to modify specifications without previous notice

Rev. A

Sheet 1/5



ULTIME D Patented

metalfire

## Technical Document

Model: ULTIME D MF 600-50 WHE 1S

### Dimensions (mm)

- combustion opening WxH: 636x506
- external WxDxH: 860x619x1561
- fresh air: 2xØ150
- diameter flue: Ø250

### Technical Data

- capacity: 13.8kW
- efficiency capacity: 80.3%
- CO (volume with 13%O<sub>2</sub>): 0.09%
- dust (volume with 13%O<sub>2</sub>): 33mg/N<sup>3</sup>
- weight: 345kg
- Air intake to convection: minimum 360cm<sup>2</sup> (4xØ150)
- Air exhaust to convection: minimum 360cm<sup>2</sup> (4xØ150)

### Specifications

- inside finishing: heat-resistant black paint
- vermiculite insulation plates
- convection jacket in galvanized steel
- cast iron stoke grate
- back and sides: ribbed cast iron
- interior finishing: ORIGINAL (ribbed cast iron)

### Options

- Promat insulation kit
- Finishing frame

Table: prescribed insulation thickness (mm)

Combustable finishing material					
	A	B	C	D	E
Test report (TC = 0,14 W/mK)	63	NC	120	113	40
Metalfire recommended Promasil 1100L (TC = 0,081 W/mK)	40	NC	70	65	25
Non-combustable finishing material					
non-combustable materials (structural building items EXCLUDED e.g. load bearing walls)	0	0	0	0	0
TC = thermal conductivity NC = non-combustable					

### First aid and technical support:

- support@metalfire.eu
- +32 (0)9 261 50 57

scale 1:30

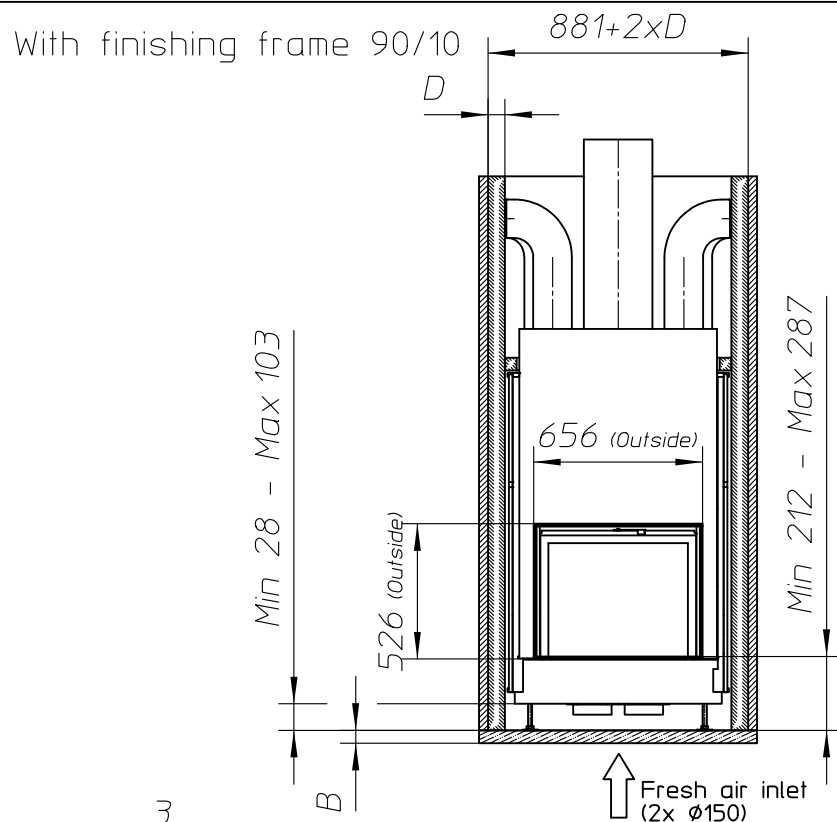
Rev.  
A

www.metalfire.eu EN 13229

CE  
Sheet  
2/5

General dimensional tolerances up to 6mm  
Metalfire preserves the right to modify specifications without previous notice

- Combustable finishing material
- Non-combustable finishing material
- Insulation
- Insulation thickness => see table

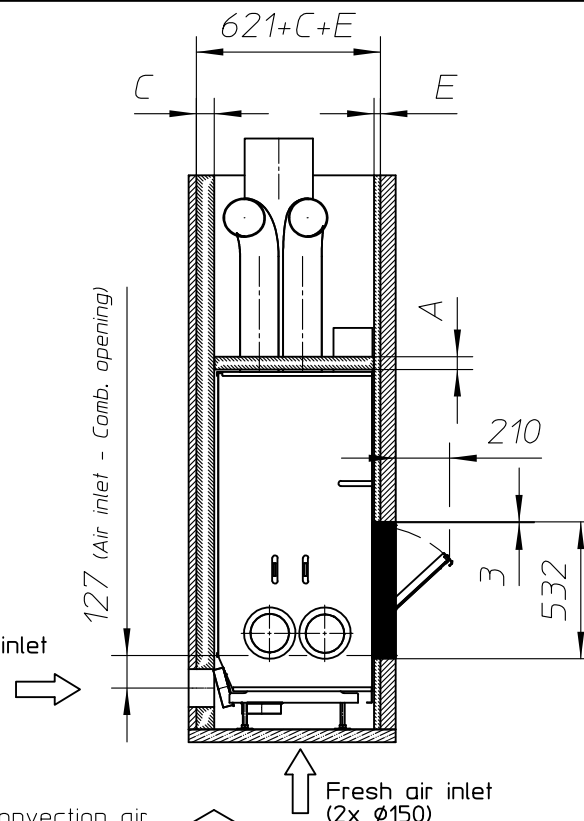


Detail3  
Scale 1:10

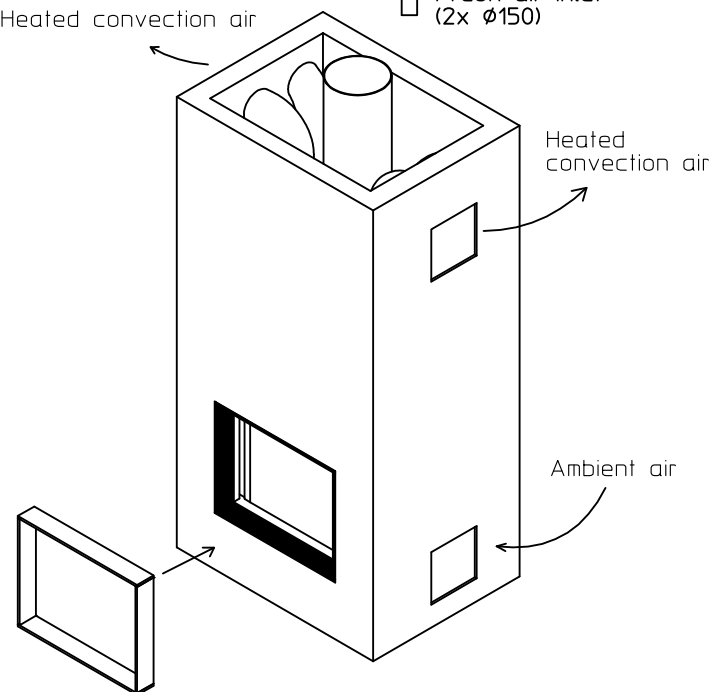
Do NOT place any  
combustable materials  
in this zone

see Detail3

Alternative fresh air inlet  
(2x Ø150)



Heated convection air



ULTIME D Patented

metalfire

## Technical Document

Model: ULTIME D MF 600-50 WHE 1S

### Dimensions (mm)

- combustion opening WxH: 636x506
- external WxDxH: 860x619x1531
- fresh air: 2xØ150
- diameter flue: Ø250

### Technical Data

- capacity: 13.8kW
- efficiency capacity: 80.3%
- CO (volume with 13%O<sub>2</sub>): 0.09%
- dust (volume with 13%O<sub>2</sub>): 33mg/N<sup>3</sup>
- weight: 345kg

- Air intake to convection: minimum 360cm<sup>2</sup> (2xØ150)
- Air exhaust to convection: minimum 360cm<sup>2</sup> (2xØ150)

### Specifications

- inside finishing: heat-resistant black paint
- vermiculite insulation plates
- convection jacket in galvanized steel
- cast iron stoke grate
- back and sides: ribbed cast iron
- interior finishing: ORIGINAL (ribbed cast iron)

### Options

- Promat insulation kit
- Finishing frame

### Table: prescribed insulation thickness (mm)

Combustable finishing material					
	A	B	C	D	E
Test report (TC = 0,14 W/mK)	63	NC	120	113	40
Metalfire recommended Promasil 1100L (TC = 0,081 W/mK)	40	NC	70	65	25
Non-combustable finishing material					
non-combustable materials (structural building items EXCLUDED e.g. load bearing walls)	0	0	0	0	0
TC = thermal conductivity NC = non-combustable					

### First aid and technical support:

- support@metalfire.eu
- +32 (0)9 261 50 57

scale 1:20

www.metalfire.eu EN 13229

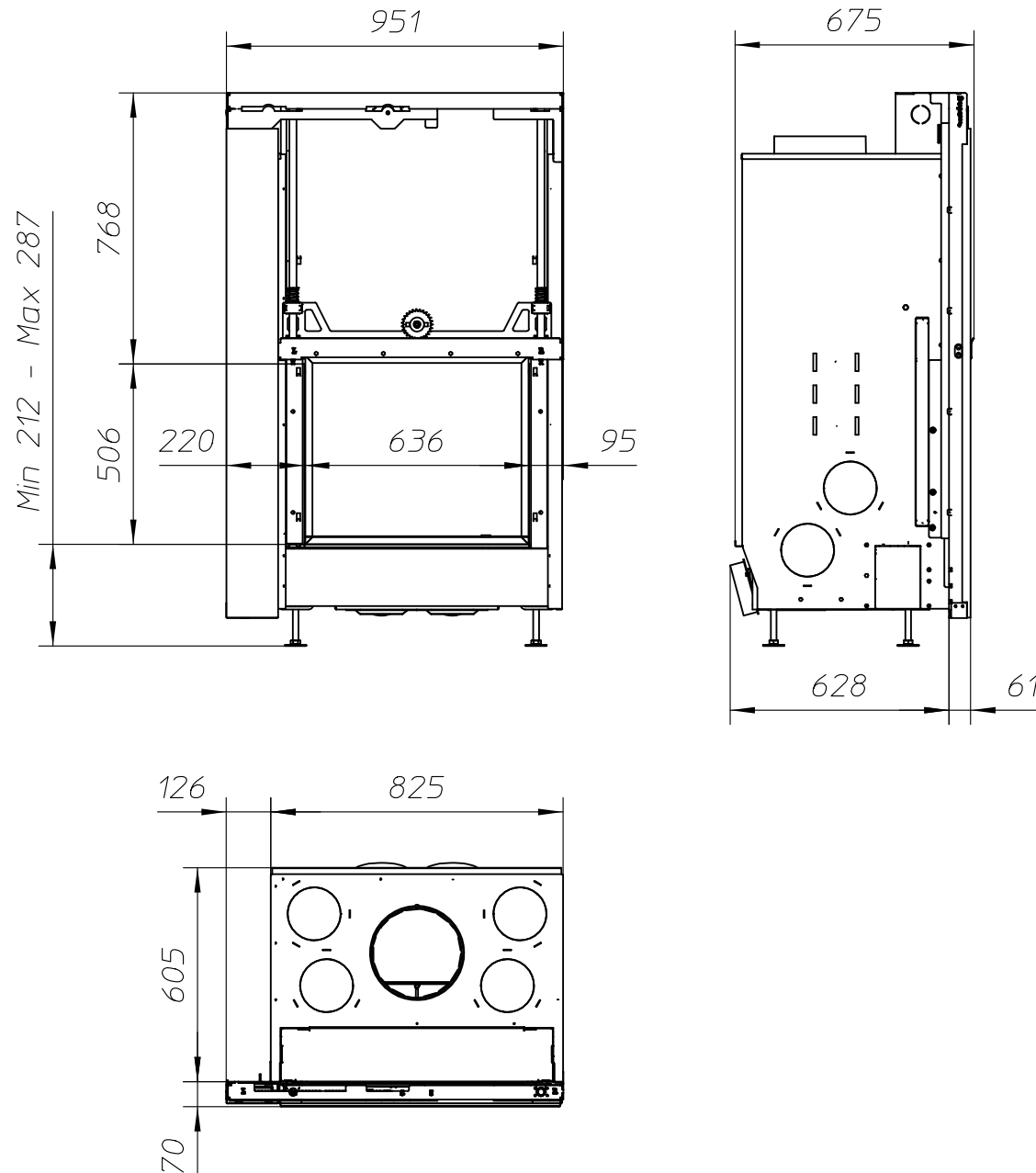
General dimensional tolerances up to 6mm  
Metalfire preserves the right to modify specifications without previous notice

Rev.  
A

Sheet  
3/5

- Combustable finishing material
- Non-combustable finishing material
- Insulation
- Insulation thickness => see table

WITH FIRESCREEN - NO FINISHING FRAME



ULTIME D<sub>Patented</sub>

metalfire

## Technical Document

Model: ULTIME D MF 600-50 WHE 1S

### Dimensions (mm)

- combustion opening WxH: 636x506
- external WxDxH: 951x675x1561
- fresh air: 2xØ150
- diameter flue: Ø250

### Technical Data

- capacity: 13.8kW
- efficiency capacity: 80.3%
- CO (volume with 13%O<sub>2</sub>): 0.09%
- dust (volume with 13%O<sub>2</sub>): 33mg/N<sup>3</sup>
- weight: 345kg
- Air intake to convection: minimum 360cm<sup>2</sup> (2xØ150)
- Air exhaust to convection: minimum 360cm<sup>2</sup> (2xØ150)

### Specifications

- inside finishing: heat-resistant black paint
- vermiculite insulation plates
- convection jacket in galvanized steel
- cast iron stoke grate
- back and sides: ribbed cast iron
- interior finishing: ORIGINAL (ribbed cast iron)

First aid and technical support:

- support@metalfire.eu
- +32 (0)9 261 50 57

scale 1:20

Rev.  
A

www.metalfire.eu EN 13229

CE

General dimensional tolerances up to 6mm  
Metalfire preserves the right to modify specifications without previous notice

Sheet  
4/5

Model: ULTIME D MF 600-50 WHE 1S

## Dimensions (mm)

- combustion opening WxH: 636x506
- external WxDxH: 951x749x1561
- fresh air: 2xØ150
- diameter flue: Ø250

## Technical Data

- capacity: 13.8kW
- efficiency capacity: 80.3%
- CO (volume with 13%O<sub>2</sub>): 0.09%
- dust (volume with 13%O<sub>2</sub>): 33mg/N<sup>3</sup>
- weight: 345kg
- Air intake to convection: minimum 360cm<sup>2</sup> (2xØ150)
- Air exhaust to convection: minimum 360cm<sup>2</sup> (2xØ150)

## Specifications

- inside finishing: heat-resistant black paint
- vermiculite insulation plates
- convection jacket in galvanized steel
- cast iron stoke grate
- back and sides: ribbed cast iron
- interior finishing: ORIGINAL (ribbed cast iron)

First aid and technical support:

- support@metalfire.eu
- +32 (0)9 261 50 57

scale 1:20

www.metalfire.eu EN 13229

General dimensional tolerances up to 6mm  
Metalfire preserves the right to modify specifications without previous noticeRev.  
A

CE

Sheet  
5/5